

Antistatic polyurethane hose, light weight, microbe resistant + flame-retardant

Application

- flexible hose/ ducting for gases and for abrasive dust, powder, fibers
- printed circuit board drilling machines (PCB)
- extraction unit, dust collection systems, filter system, oil mist extraction
- extraction arm
- chemical industry: chemical vapors, vapor return hose at loading arm, paint steam, spray mist extraction
- explosion hazard area
- animal stall, animal shed: barn ventilation
- clean room ventilation, semiconductor production machine
- surface preparation: shot blasting/ sand blasting recovery (blasting chamber), ship yard, stripping machine, flooring preparation machine, grinding machine
- heating hose: exterior hose as protection hose

Properties

- lightweight and reinforced

- highly flexible + compressible 3:1
- abrasion-resistant
- microbe resistant
- good resistance to oil, gasoline, and chemicals
- very good low temperature flexibility
- flame-retardant according to: UL94-HB
- flame-retardant according to: DIN 4102-B1
- permanently antistatic wall: according to ISO 8031 electrical and surface resistance $<10^9 \Omega$ (according to TRGS 727 $<2,5 \cdot 10^8 \Omega \cdot m$ and NFPA 652 $10^8-10^9 \Omega$)
- in accordance with ATEX 2014/34/EU (1999/92/EC) and German TRGS 727: aspiration of combustible dust (zone 22 inside), for conveying of non-flammable liquids, for use in zone 1 and 2 (gases)
- conforms to the safety regulations of the German Wood Trade Association
- conforms to RoHS guideline
- REACH according to --> Technology / Technical Information / REACH

Temperature range

- 40 °F to 195 °F
- short time to 255 °F

Design

- patented PROTAPE® tape hose
- spring steel wire integrated in wall
- wall: permanently antistatic premium ester-polyurethane (Pre-PUR®)
- wall thickness 0.025 in approx.

Delivery variants

- further diameters and lengths available on request
- transparent (standard)
- special colors: partially colored, completely colored
- customer-specific branding

I.D.	outer Ø	Pressure DIN 26057 (50% Elongation)	Vacuum DIN 26057 (axially fixed)	Bending radius	Weight	Minimum Quantity	Dimensions in Stock	Order No.	Production lengths
(in / mm)	(in)	(psi)	(inHG)	(in)	(lb/ft)	(ft)	(ft)		(ft)

more compressed packaging approx. 5:1, neutral imprint, no cutting

1,5 / 38	1.772	15.592 (40.321)	10.483 (22.738)	1.024	0.148	150	-	330-0038-2030	-
- / 40	1.850	14.794 (38.291)	9.893 (20.376)	1.063	0.155	150	-	330-0040-2030	-
2 / 50-51	2.283	11.893 (30.748)	6.497 (25.691)	1.299	0.249	150	-	330-0050-2030	-
2,36 / 60	2.677	9.935 (25.672)	5.315 (18.013)	1.496	0.289	150	-	330-0060-2030	-
2,5 / 63-65	2.874	9.210 (23.787)	4.872 (15.356)	1.614	0.309	150	-	330-0065-2030	-
- / 70	3.071	8.557 (22.046)	4.577 (13.289)	1.693	0.336	150	-	330-0070-2030	-
3 / 75-76	3.268	7.977 (20.596)	4.282 (11.812)	1.811	0.356	100	-	330-0075-2030	-
- / 80	3.465	7.470 (19.290)	3.987 (10.336)	1.890	0.383	100	-	330-0080-2030	-
4 / 100-102	4.252	6.019 (15.519)	2.362 (9.154)	2.283	0.450	100	-	330-0100-2030	-
4,72 / 120	5.039	5.004 (12.909)	1.919 (6.497)	2.677	0.531	100	-	330-0120-2030	-
5 / 125-127	5.236	4.859 (12.473)	1.919 (5.906)	2.795	0.558	100	-	330-0125-2030	-
5,5 / 140	5.827	4.279 (11.023)	1.624 (4.725)	3.071	0.618	80	-	330-0140-2030	-
6 / 150-152	6.220	3.989 (10.298)	1.624 (4.134)	3.268	0.665	80	-	330-0150-2030	-
6,3 / 160	6.614	3.771 (9.718)	1.477 (3.544)	3.465	0.706	80	-	330-0160-2030	-
7 / 178-180	7.402	3.336 (8.557)	1.329 (2.953)	3.858	0.786	80	-	330-0180-2030	-
8 / 200-203	8.189	3.046 (7.832)	0.886 (3.248)	4.252	0.894	60	-	330-0200-2030	-

Overpressure and underpressure are recommended threshold operating values, products can be subjected to higher loads upon request. The bending radius is measured through the inside of the hose arch. The right to make technical modifications is reserved. All values determined at 68 °F and are approx. data. Additional information at www.norres.com/us/technology/



I.D.	outer Ø	Pressure DIN 26057 (50% Elongation)	Vacuum DIN 26057 (axially fixed)	Bending radius	Weight	Minimum Quantity	Dimensions in Stock	Order No.	Production lengths
(in / mm)	(in)	(psi)	(inHG)	(in)	(lb/ft)	(ft)	(ft)		(ft)
- / 225	9.173	2.683 (6.962)	0.738 (2.658)	4.764	0.995	60	-	330-0225-2030	-
- / 250	10.079	2.393 (6.237)	0.738 (2.067)	5.236	1.102	50	-	330-0250-2030	-
- / 300	12.165	2.031 (5.221)	0.591 (1.477)	6.260	1.438	40	-	330-0300-2030	-

neutral imprint: <ID> antistatic + microbe resistant <neutral batch no.> / no cutting

1,5 / 38	1.772	15.592 (40.321)	10.483 (22.738)	1.024	0.148	-	10	330-0038-0007	-
- / 40	1.850	14.794 (38.291)	9.893 (20.376)	1.063	0.155	-	10	330-0040-0007	-
2 / 50-51	2.283	11.893 (30.748)	6.497 (25.691)	1.299	0.249	-	10	330-0050-0007	-
2,36 / 60	2.677	9.935 (25.672)	5.315 (18.013)	1.496	0.289	-	10	330-0060-0007	-
2,5 / 63-65	2.874	9.210 (23.787)	4.872 (15.356)	1.614	0.309	-	10	330-0065-0007	-
- / 70	3.071	8.557 (22.046)	4.577 (13.289)	1.693	0.336	-	10	330-0070-0007	-
3 / 75-76	3.268	7.977 (20.596)	4.282 (11.812)	1.811	0.356	-	10	330-0075-0007	-
- / 80	3.465	7.470 (19.290)	3.987 (10.336)	1.890	0.383	-	10	330-0080-0007	-
4 / 100-102	4.252	6.019 (15.519)	2.362 (9.154)	2.283	0.450	-	10	330-0100-0007	-
4,72 / 120	5.039	5.004 (12.909)	1.919 (6.497)	2.677	0.531	-	10	330-0120-0007	-
5 / 125-127	5.236	4.859 (12.473)	1.919 (5.906)	2.795	0.558	-	10	330-0125-0007	-
5,5 / 140	5.827	4.279 (11.023)	1.624 (4.725)	3.071	0.618	-	10	330-0140-0007	-
6 / 150-152	6.220	3.989 (10.298)	1.624 (4.134)	3.268	0.665	-	10	330-0150-0007	-
6,3 / 160	6.614	3.771 (9.718)	1.477 (3.544)	3.465	0.706	-	10	330-0160-0007	-
7 / 178-180	7.402	3.336 (8.557)	1.329 (2.953)	3.858	0.786	-	10	330-0180-0007	-
8 / 200-203	8.189	3.046 (7.832)	0.886 (3.248)	4.252	0.894	-	10	330-0200-0007	-
- / 225	9.173	2.683 (6.962)	0.738 (2.658)	4.764	0.995	-	10	330-0225-0007	-
- / 250	10.079	2.393 (6.237)	0.738 (2.067)	5.236	1.102	-	10	330-0250-0007	-
- / 300	12.165	2.031 (5.221)	0.591 (1.477)	6.260	1.438	-	10	330-0300-0007	-

standard

1 / 25	1.260	23.279 (60.627)	15.946 (29.530)	0.787	0.101	-	5 10 15	330-0025-1002	-
- / 30	1.457	19.580 (50.764)	13.289 (29.530)	0.866	0.121	-	5 10 15	330-0030-1002	-
1,25 / 32	1.535	18.348 (47.718)	12.403 (29.530)	0.906	0.128	-	5 10 15	330-0032-1002	-
1,5 / 38	1.772	15.592 (40.321)	10.483 (22.738)	1.024	0.148	-	5 10 15	330-0038-1002	-
- / 40	1.850	14.794 (38.291)	9.893 (20.376)	1.063	0.155	-	5 10 15	330-0040-1002	-
2 / 50-51	2.283	11.893 (30.748)	6.497 (25.691)	1.299	0.249	-	5 10 15	330-0050-1002	-
2,36 / 60	2.677	9.935 (25.672)	5.315 (18.013)	1.496	0.289	-	5 10 15	330-0060-1002	-
2,5 / 63-65	2.874	9.210 (23.787)	4.872 (15.356)	1.614	0.309	-	5 10 15	330-0065-1002	-
- / 70	3.071	8.557 (22.046)	4.577 (13.289)	1.693	0.336	-	5 10 15	330-0070-1002	-
3 / 75-76	3.268	7.977 (20.596)	4.282 (11.812)	1.811	0.356	-	5 10 15	330-0075-1002	-
- / 80	3.465	7.470 (19.290)	3.987 (10.336)	1.890	0.383	-	5 10 15	330-0080-1002	-
3,5 / 89-90	3.858	6.672 (17.260)	3.544 (8.268)	2.087	0.423	-	5 10 15	330-0090-1002	-
4 / 100-102	4.252	6.019 (15.519)	2.362 (9.154)	2.283	0.450	-	5 10 15	330-0100-1002	-
- / 110	4.646	5.439 (14.069)	2.067 (7.678)	2.480	0.491	-	5 10 15	330-0110-1002	-
4,5 / 114-115	4.843	5.221 (13.489)	2.067 (7.087)	2.598	0.511	-	5 10 15	330-0115-1002	-
4,72 / 120	5.039	5.004 (12.909)	1.919 (6.497)	2.677	0.531	-	5 10 15	330-0120-1002	-
5 / 125-127	5.236	4.859 (12.473)	1.919 (5.906)	2.795	0.558	-	5 10 15	330-0125-1002	-
- / 130	5.433	4.641 (11.893)	1.772 (5.611)	2.874	0.578	-	5 10 15	330-0130-1002	-
5,5 / 140	5.827	4.279 (11.023)	1.624 (4.725)	3.071	0.618	-	5 10 15	330-0140-1002	-
6 / 150-152	6.220	3.989 (10.298)	1.624 (4.134)	3.268	0.665	-	5 10 15	330-0150-1002	-
6,3 / 160	6.614	3.771 (9.718)	1.477 (3.544)	3.465	0.706	-	5 10 15	330-0160-1002	-
- / 170	7.008	3.553 (9.138)	1.329 (3.248)	3.661	0.746	-	5 10 15	330-0170-1002	-
- / 175	7.205	3.481 (8.847)	1.329 (2.953)	3.780	0.766	-	5 10 15	330-0175-1002	-
7 / 178-180	7.402	3.336 (8.557)	1.329 (2.953)	3.858	0.786	-	5 10 15	330-0180-1002	-
8 / 200-203	8.189	3.046 (7.832)	0.886 (3.248)	4.252	0.894	-	5 10 15	330-0200-1002	-
- / 225	9.173	2.683 (6.962)	0.738 (2.658)	4.764	0.995	-	5 10	330-0225-1002	-
- / 250	10.157	2.393 (6.237)	0.738 (2.067)	5.236	1.102	-	5 10	330-0250-1002	-

Overpressure and underpressure are recommended threshold operating values, products can be subjected to higher loads upon request. The bending radius is measured through the inside of the hose arch. The right to make technical modifications is reserved. All values determined at 68°F and are approx. data. Additional information at www.norres.com/us/technology/



I.D.	outer Ø	Pressure DIN 26057 (50% Elongation)	Vacuum DIN 26057 (axially fixed)	Bending radius	Weight	Minimum Quantity	Dimensions in Stock	Order No.	Production lengths
(in / mm)	(in)	(psi)	(inHG)	(in)	(lb/ft)	(ft)	(ft)		(ft)
10 / 254	10.315	2.393 (6.092)	0.738 (1.772)	5.315	1.116	-	5 10	330-0254-1002	-
11 / 280	11.339	2.176 (5.512)	0.591 (1.477)	5.827	1.230	-	5 10	330-0280-1002	-
- / 300	12.165	2.031 (5.221)	0.591 (1.477)	6.260	1.438	-	5 10	330-0300-1002	-
12 / 305	12.362	1.958 (5.076)	0.591 (1.477)	6.378	1.458	-	5 10	330-0305-1002	-
- / 315	12.756	1.958 (4.931)	0.591 (1.477)	6.575	1.505	-	5 10	330-0315-1002	-
- / 350	14.134	1.740 (4.496)	0.591 (1.181)	7.244	1.673	-	5 10	330-0350-1002	-
14 / 356	14.370	1.668 (4.351)	0.443 (0.886)	7.362	1.700	-	5 10	330-0356-1002	-
- / 400	16.102	1.523 (3.916)	0.443 (0.591)	8.228	1.909	-	5 10	330-0400-1002	-
- / 450	18.071	1.378 (3.481)	0.443 (0.591)	9.213	2.144	-	5 10	330-0450-1002	-
- / 500	20.079	1.233 (3.046)	0.443 (0.591)	10.236	2.950	-	5 10	330-0500-1002	-

Overpressure and underpressure are recommended threshold operating values, products can be subjected to higher loads upon request. The bending radius is measured through the inside of the hose arch. The right to make technical modifications is reserved. All values determined at 68°F and are approx. data. Additional information at www.norres.com/us/technology/

Accessories



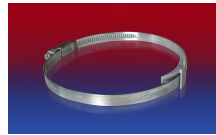
CLAMP 217



CLAMP 213



CLAMP 212



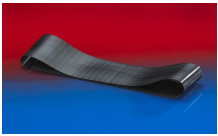
CLAMP 210 BRIDGE CLAMP



CONNECT 270-271



CONNECT 223



CONNECT 228

Overpressure and underpressure are recommended threshold operating values, products can be subjected to higher loads upon request. The bending radius is measured through the inside of the hose arch. The right to make technical modifications is reserved. All values determined at 68°F and are approx. data. Additional information at www.norres.com/us/technology/