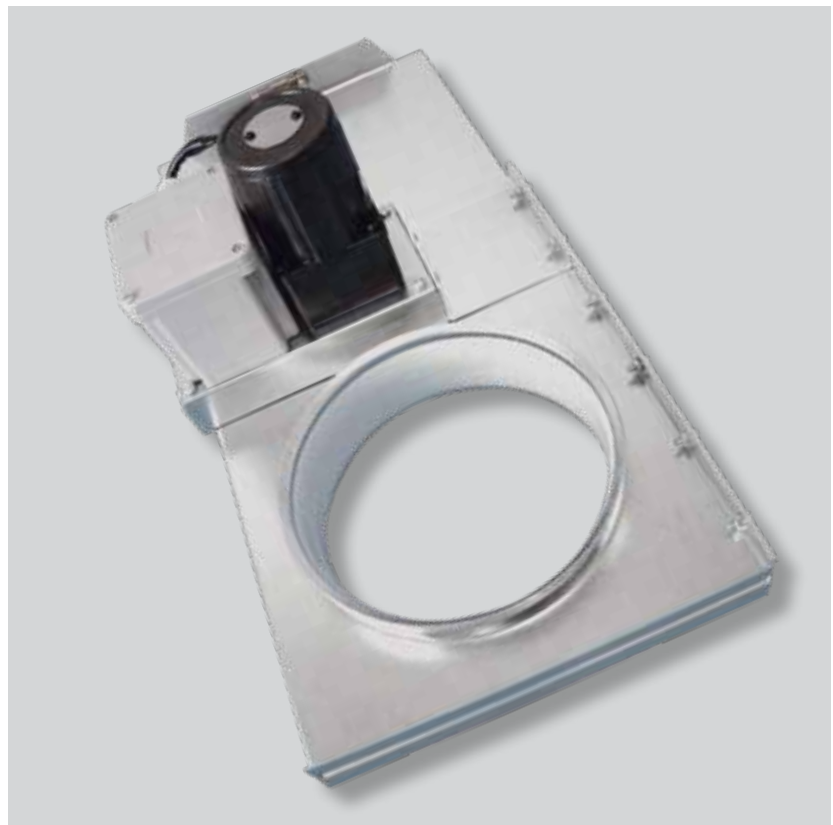




ECO-MOT

ECO-P

Energy-saving blast gate

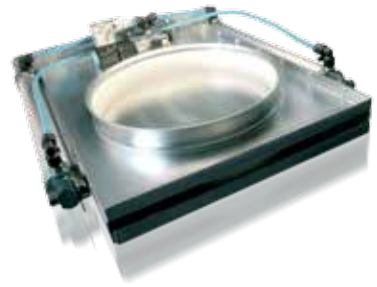


HÖCKER[®]
POLYTECHNIK

Always one idea ahead

EXHAUST EFFECT IN SECONDS.

Automatic shut-off blast gates for suction pipes are prescribed legally for installation in new plants in many sectors, for reasons of work safety. Customary shut-off blast gates however, are quite bulky, they are difficult to install and are exposed to a high degree of wear and tear due to friction. Moreover, some of the products open very slowly or have drive-weak engines. But not so the ECO-P and ECO-MOT shut-off blast gates: a sealing developed exclusively for this purpose, made of heavy-duty, self-lubricating plastic ensures safe guidance and optimum sealing.



ADVANTAGES/ BENEFITS

- Opens and closes automatically -> saves energy and costs
- Double-sided pneumatic cylinder -> fast opening times, immediate suction effect (ECO-P)
- Strong gear motor with push/pull chain drive (ECO-MOT)
- Special plastic sealing ring -> high degree of sealing and hardly any wear and tear
- Smooth running properties -> low noise level
- Compact design -> less space requirement
- Robust steel plate design -> long durability
- Light weight -> quick installation, simple loading in existing system
- Optional bypass function with the help of PLC control
- Rapid, frequent switching cycles for flexible use
- Favorable price due to cost-effective serial production

TECHNICAL DATA

- For suction-side usage in dust removal systems (version ESO-S for extraction material in stripes)
- Opening/ closing time app. 1.5 seconds. Activation duration 100% (ECO-MOT opening time < 6 seconds/ activation duration 60%)
- Energy saving blast gates available in usual diameters:
ECO-P up to \varnothing 400mm und ECO-MOT up to \varnothing 300mm (withour 220/225mm)
- Low-pressure-proof up to 3,500 Pa

ECO-MOT (with gear motor)

ECO-P (with pneumatic cylinder)

Diameter	Length (open/ closed) (mm)	Width (mm)	Height (mm)	Electrical connection	Weight (kg)	Length (open/ closed) (mm)	Width (mm)	Height (mm)	Electrical connection*	Weight (kg)
80 mm	405/275	215	205	230 V/4 W	4,7	420/290	260	290	24 V/1,1 W	4,2
100 mm	405/290	215	205	230 V/4 W	4,7	420/290	260	290	24 V/1,1 W	4,2
120 mm	405/290	215	205	230 V/4 W	4,7	420/290	260	290	24 V/1,1 W	4,2
140 mm	475/315	235	205	230 V/4 W	5,6	495/330	300	330	24 V/1,1 W	5,2
160 mm	475/315	235	205	230 V/4 W	5,6	495/330	300	330	24 V/1,1 W	5,2
180 mm	595/405	270	205	230 V/10 W	7,2	610/410	340	410	24 V/1,1 W	6,6
200 mm	595/405	270	205	230 V/10 W	7,2	610/410	340	410	24 V/1,1 W	6,6
250 mm	700/455	320	205	230 V/10 W	7,5	715/455	390	455	24 V/1,1 W	8,2
300 mm	880/580	380	260	230 V/10 W	14,0	905/595	465	595	24 V/1,1 W	16,1
350 mm		—				1005/645	520	645	24 V/1,1 W	18,2
400 mm			—			1105/695	570	695	24 V/1,1 W	20,9

All technical data and specifications valid at the time of printing. We accept no liability for changes, mistakes or printing errors.

* optionally with 230V/5,5VA/P65

HÖCKER POLYTECHNIK GmbH

Borgloher Straße 1 · 49176 Hilter · Germany · Fon + 49 (0) 5409 405-0 · Fax + 49 (0) 5409 405-555

www.hoecker-polytechnik.de · info@hpt.net

HÖCKER
POLYTECHNIK
Always one idea ahead